

LIGHTING REVAMP

REAPS REWARDS



Asurion Australia is a workshop facility based in Sydney's south-west that specialises in mobile phone repairs for both Optus and Telstra. Trackie Industries was initially contacted in an effort to reduce lighting costs, however, the end benefits were much greater than reduced energy costs.

Workshop before shot showing inefficient T8 36W twin fluorescent tubes

Asurion was experiencing major lighting issues, the first being that their employees needed quality light to perform the detailed repairs required on the mobile phones they serviced. The next issue was the existing lights were inefficient T8 36W twin fluorescent tubes that did not provide adequate light for the tasks at hand. Visually demanding work requires good lighting, so additional desk lamps had to be placed at each workstation.

Asurion is an international company that requires 24-hour video surveillance as a mandate. For this to be effective, the entire facility needed to be illuminated 24/7. During the day the facility had all the lights on but at night when nobody was onsite, all the lights were turned off. As a result, the surveillance cameras were unable to function at night. Keeping these lights on 24/7 would incur a large electricity bill due to the T8s inefficiency.

Asurion needed lights that would provide low glare but also enough light to be able to remove all the desk lamps. They also wanted an energy efficient solution for operation 24/7 for surveillance purposes.

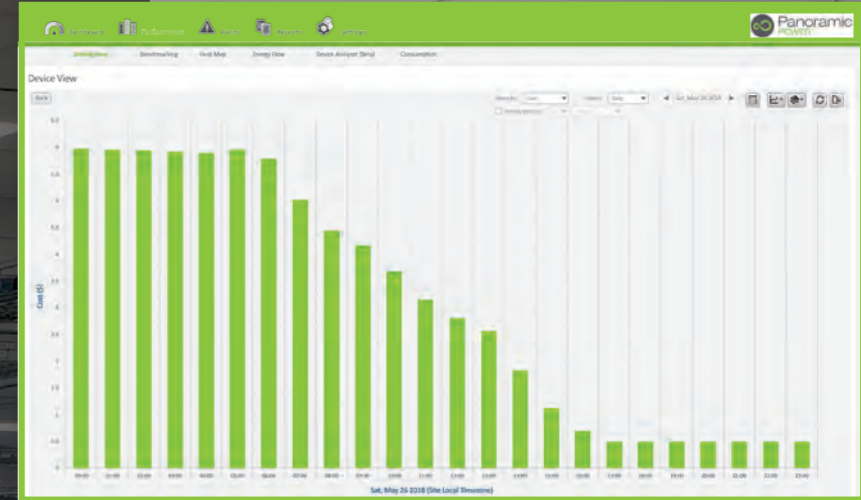
enLighten's Skyline Panel, 4000k 30W was chosen. It is a low-glare edge-lit LED panel that provides an energy efficient retrofit solution to conventional fluorescent fit outs. At Asurion, the Skyline produced approximately 42 per cent more light than the existing lights, which allowed them to remove all the desk lamps.

Similarly, the low-glare rating of the enLighten Skyline Panel meant Asurion no longer experienced the lighting bouncing from the floor surface. The team has reported productivity increases and there has been a reduction in complaints due to eye strain.

Finally, the energy savings have meant that Asurion's profits have increased. After monitoring and benchmarking the energy usage, it was confirmed that prior to the upgrade, it was costing Asurion \$6p/h to run the lights 24/7. Following the upgrade, it now costs them 50c p/h during work hours. The icing on the cake is that because the light levels have increased, only two circuits are required to run during the evening as there is enough light to meet the needs of the surveillance camera requirements. The lighting upgrade achieved a 95 per cent saving in energy spend!

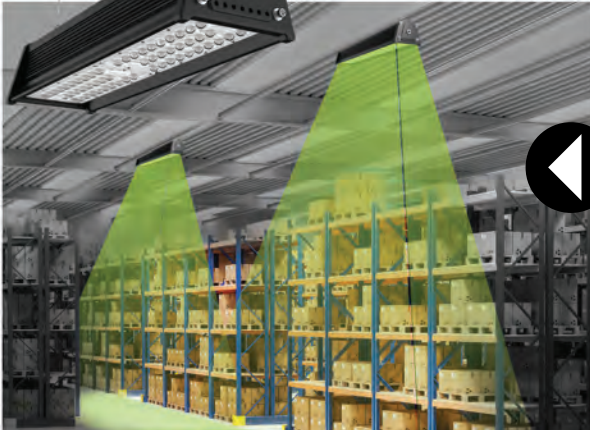
Additional benefits for Asurion include receiving a government rebate for energy savings and the elimination of lighting maintenance. In other words, light globes no longer need to be changed and finally, staff morale is up, just like the lighting levels.

Asurion likes to share the wins and proudly display the data with regards to energy and CO2 reduction for all the team to enjoy. ■



Cost reduction during installation

Workshop after using enLighten's low-glare Skyline panels, 4000k 30W



EFFICIENCY IN SPADES

Save up to 95 per cent in energy savings and eliminate waste light. Tauro Black maximises your energy savings by eliminating waste light and hot spots through the use of custom optics and industry leading efficacy of up to 165 lumen per watt. Aisle racking optics are transforming the warehouse environment. Vertical illumination improves pick accuracy and productivity by making it easier to read labels and retrieve stock. The Tauro Black also provides uniform horizontal lighting throughout the facility creating a safe workplace.

www.enlighten.com.au

GREEN AND CLEAN

KNX is an open protocol building management system allowing products from various manufacturers to communicate through one common language. Maser's new range of KNX cables ensure a reliable, environmentally friendly connection between certified KNX devices. Identifiable with a Green outer sheath and the KNX logo, our Low Smoke Zero Halogen (LSZH) PVC-Free design reduces the impact on the environment, and are ideally suited for Green Star, or in-building applications. Available now from Maser.

www.maser.com.au



AUTOMATION MADE EASY

Legrand Australia has launched Arteor with Netatmo, a collection of smart switches and sockets allowing for complete control of the home utilising a smart device or voice commands via digital assistants such as Google Home, Apple's Siri and Amazon Alexa. Arteor with Netatmo allows homeowners to control lights, small appliances, blinds and shutters, monitor energy consumption and create tailored scenarios. Each Arteor with Netatmo switch and socket communicates individually, extending its overall range.

www.legrand.com.au



ELCON CABLES

SYDNEY - BRISBANE - MELBOURNE - PERTH - ADELAIDE

Elcon Cables is one of Australia's largest privately owned cable distribution companies. We are proud to have been in business for over 20 years - providing exceptional service at competitive prices with both quality Australian made cables and the best from overseas. In addition, Elcon Cables manufactures custom made cable assemblies for some of Australia's leading companies.



www.elconcables.com.au

GRID-SCALE VANADIUM BATTERY TO BE BUILT IN SA

Renewables company Pangea Energy and vanadium battery producer CellCube are set to build a 50MW/200MWh battery storage system alongside a solar farm in South Australia, *RenewEconomy* reports.

Construction of the grid-scale battery is expected to begin before the end of the year, with plans to be operational in 2020.

Developed across 79ha in Port Augusta, the \$290 million project is the latest

in a string of solar and wind farms proposed to be built in South Australia's mid-north around the former coal city of Port Augusta.

CellCube says its vanadium redox flow technology energy storage systems can maintain

99 per cent residual energy capacity after 11,000 cycles.

CellCube says its battery will offer multiple grid services such as voltage compensation, reactive power and frequency regulation services and renewable baseload to the Australian market alongside a planned 50MW solar project on the same site.

"Our new high-performing CellCube is three times more efficient than any power-2-X or hydrogen technology which will not be available at this scale in the next three years," CellCube CEO Stefan Schauss said.

"CellCube also offers a lifetime support of 25 years with no degradation or augmentation like needed for lithium. This is real true value for money." ■



Tauro Black

High efficacy LED warehouse aisle high bay

NEW

UP TO **40% MORE EFFICIENT** THAN STANDARD LED HIGH BAYS

ELIMINATE WASTE LIGHT	SYMMETRIC & ASYMMETRIC LENS
OPTIONAL LIGHTING CONTROLS	DAYLIGHT HARVESTING & MOTION SENSOR
PEAK PERFORMANCE	165 Lumen per watt EFFICACY

Call now and start **SAVING TODAY!**

1800 365 444 | enlighten.com.au

enLighten

ND000664B