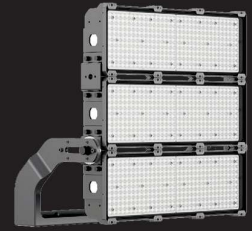


FULMEN SERIES

High-Powered Floodlight enl-SF257



Installation Instructions



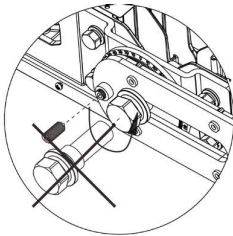
NOTE: All electrical work must be carried out by a licensed electrician as per the latest AS 3000 wiring regulations. This device must be operated within its specified operating parameters and in accordance with our warranty requirements. These documents are available on our website.
DO NOT modify the luminaire. Only use luminaire in its intended location.
Ensure luminaire is not covered with material that prevents convection or conduction cooling

General

When beginning the installation, ensure that the point of installation is at least 150mm wide, and strong enough to hold the fitting weight and wind load using at least 1 M20 bolt and a large washer.

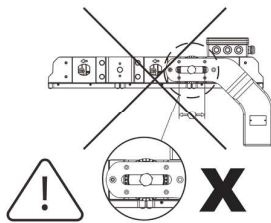
Preparation for Overslung Orientation

1.



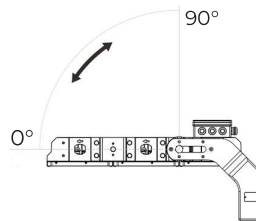
Do not remove the bolt when rotating luminaire

2.



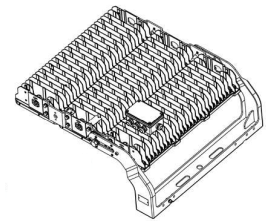
Do not leave bolt in centre of slot

3.



Adjust fitting to preferred angle, then secure bolt.

4.

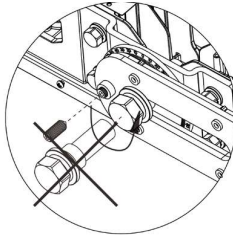


Fitting is ready for mounting

Preparation for Underslung Orientation

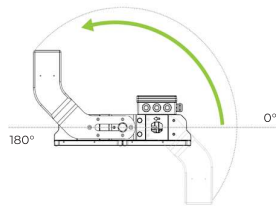
600W - 1500W

1.



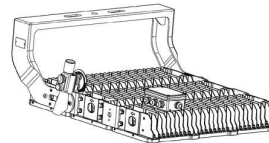
Do not remove the bolt when rotating luminaire

2.



Adjust fitting to preferred angle, then secure bolt, ensuring it is not in the centre

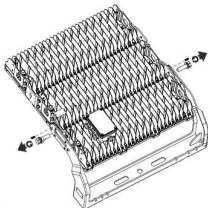
3.



Fitting is ready for mounting

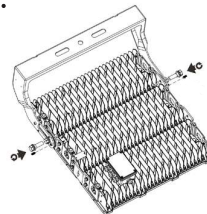
1800W

1.



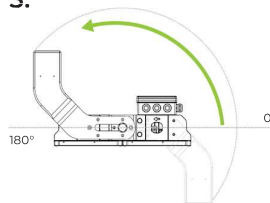
Remove bolts and bracket from fitting

2.

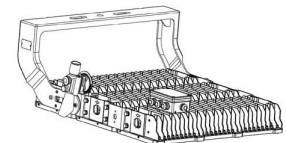


Flip bracket over, re-insert bolts to fitting

3.



Adjust fitting to preferred angle, then secure bolt, ensuring it is not in the centre



Fitting is ready for mounting

V4, Feb 2026

FULMEN SERIES

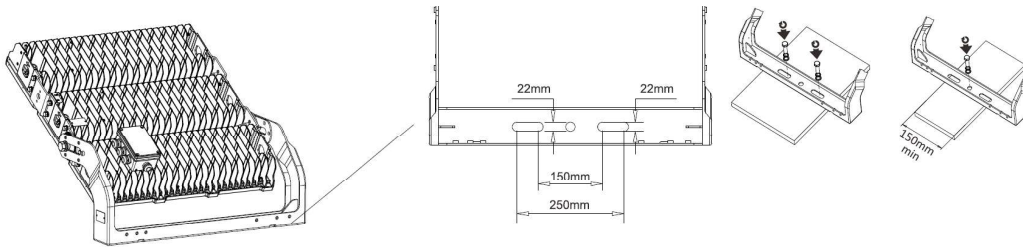
High-Powered Floodlight enl-SF257



Installation Instructions

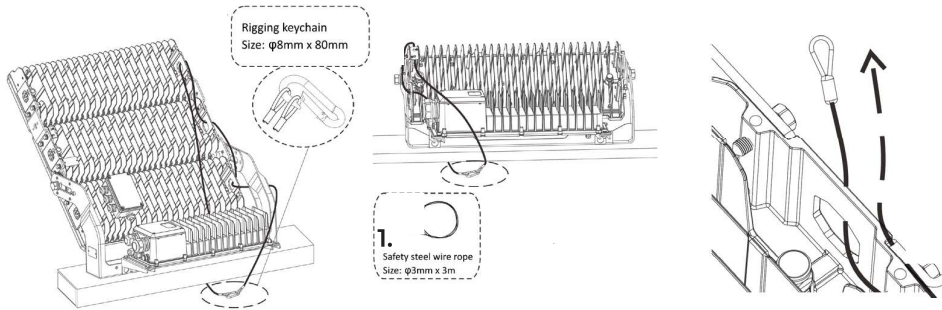
Mounting the fitting

When beginning the installation, ensure that the point of installation is at least 150mm wide, and strong enough to hold the fitting weight and wind load using at least 1 M20 bolt and a large washer.



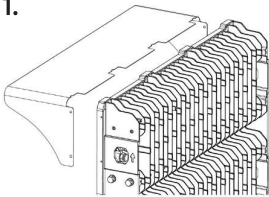
Safety Rope

When installing the required safety rope, please ensure it passes through the holes of the luminaire.



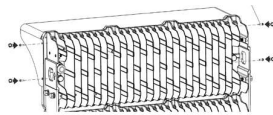
Attaching the Visor

1.



Align the visor with the fitting

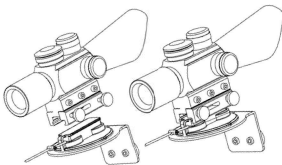
2.



Screw visor to the fitting

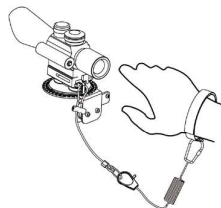
Attaching the Aiming Device

1.



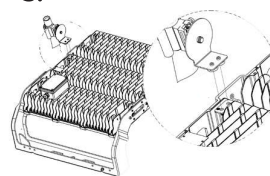
Loosen screws on aiming device and attach to bracket, then tighten screws

2.



Ensure aiming device is connected using provided cable accessory

3.

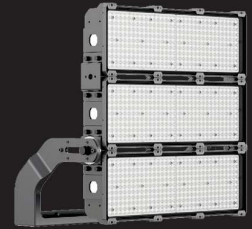


Rotate the aiming device to the angle specified in the lighting design and secure to fitting

V4, Feb 2026

FULMEN SERIES

High-Powered Floodlight enl-SF257



Installation Instructions

Driver Installation on luminaire

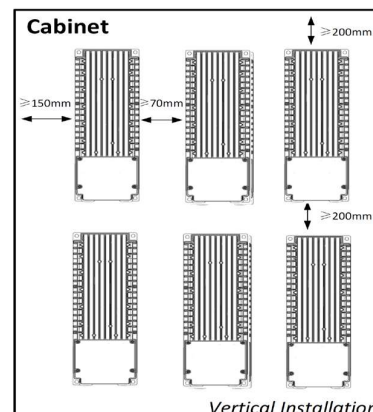
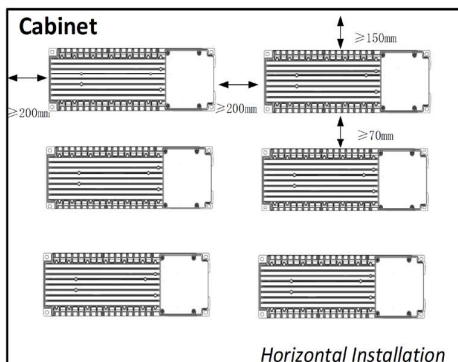
- Fasten driver brackets to mounting bracket
- Attach and secure driver to brackets
- Adjust fitting to preferred angle, then secure bolt, ensuring it is not in the centre
- Ensure driver is topside up to avoid water damage

Driver Installation on pole

- Fasten driver to pole brackets **PART NO: (enl-SF-CMB)**
- Feed cable tie through brackets
- Line up driver to pole, and tighten cable ties to secure the driver
- Ensure the driver is the right way up, with the cable glands facing downwards

Driver Installation in cabinet

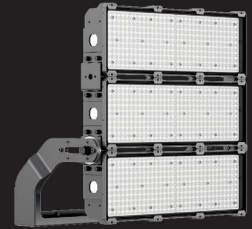
If the drivers are installed in a cabinet, the recommended distance between drivers and side walls is as shown in the drawing below. If possible, use an enclosure with light colours to reduce heat from sun exposure.



V4, Feb 2026

FULMEN SERIES

High-Powered Floodlight enl-SF257

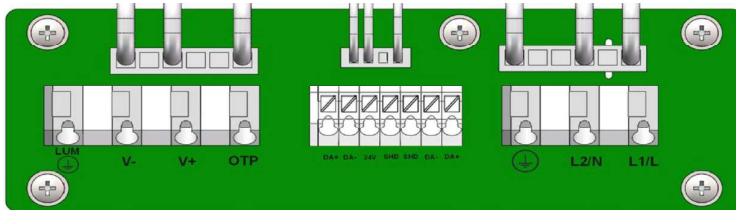
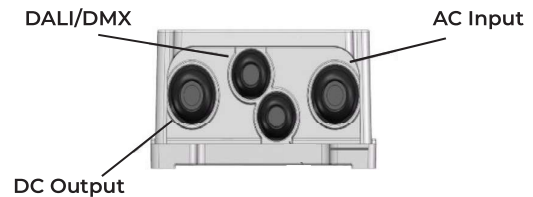


Installation Instructions

Driver Information

600W

Connection	Cable Gland	Toque (N*m)	Cable Diameter (mm)	Cable AWG	Cable Section (mm ²)	Strip Length (mm)
AC Input	M20	4	6.5-10.2	18-14	1.5-2.5	9-10
DC Output						
DALI/DMX	M16	2.5	6.5-10	18-16	1.5	

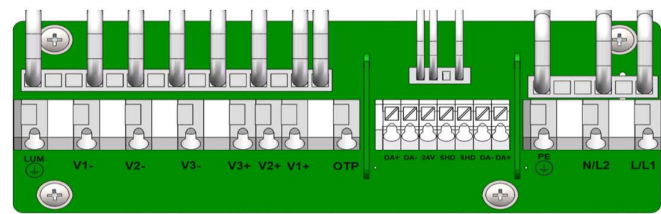
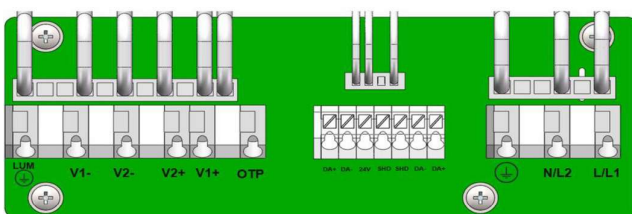


1200W

Connection	Cable Gland	Toque (N*m)	Cable Diameter (mm)	Cable AWG	Cable Section (mm ²)	Strip Length (mm)
AC Input	M25	5.5	9.9-14.7	16-14	1.5-2.5	9-10
DC Output				18-14		
DALI/DMX	M16	2.5	6.5-10	18-16	1.5	

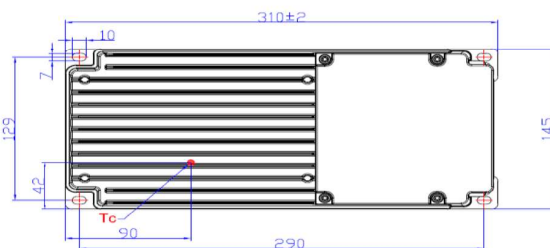
1800W

Connection	Cable Gland	Toque (N*m)	Cable Diameter (mm)	Cable AWG	Cable Section (mm ²)	Strip Length (mm)
AC Input	M25	5.5	13.7-18.4	16-14	1.5-2.5	9-10
DC Output				18-14		
DALI/DMX	M16	2.5	6.5-10	18-16	1.5	

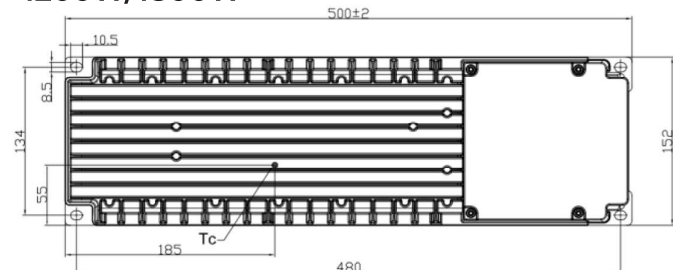


Driver Dimensions

600W



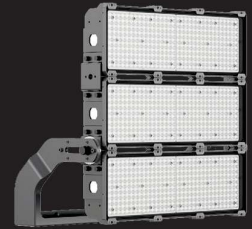
1200W/1800W



V4, Feb 2026

FULMEN SERIES

High-Powered Floodlight enI-SF257



Installation Instructions

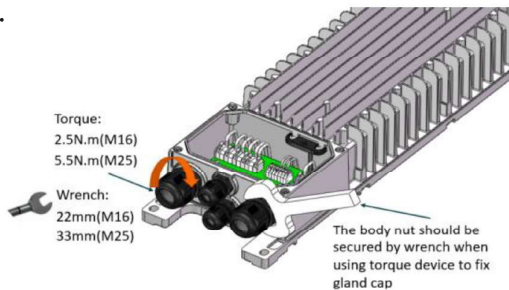
Opening the Driver and Resealing the Gasket

1.



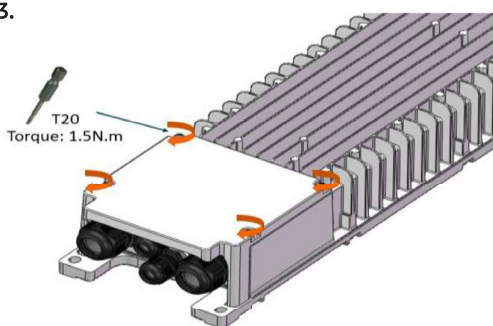
Remove Gasket from top of driver box by unscrewing the four bolts in a diagonal sequence

2.



Release the cable glands using the correct wrench and torque as shown. then complete the cable installation as shown on the next page.

3.



After completing the cable installation, Ensure the white gasket below is properly fitted and The four screws are fastened by tool in a diagonal sequence.

V4, Feb 2026

FULMEN SERIES

High-Powered Floodlight enI-SF257



Installation Instructions

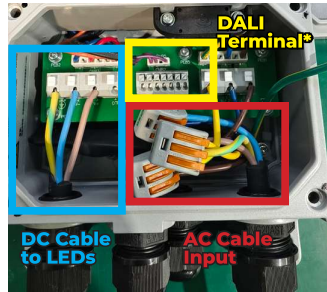
Wiring Connections

* If DALI dimming is required, connect the DALI wiring to either of the two sets of DALI terminals provided.

600W

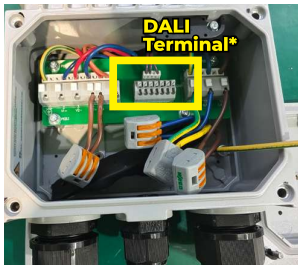


Loosen cable glands to allow AC and DC cable access to the terminal

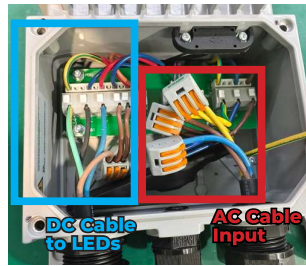


Feed cables through the cable glands and retighten to ensure IP rating. Connect AC wires to the WAGO connectors. To connect the LED cables, connect the brown DC cable to the V+ terminal, earth cable to earth terminal and the blue cable to the V- terminal as shown.

1200W

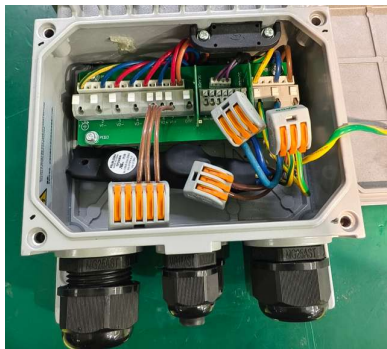


Loosen cable glands to allow AC and DC cable access to the terminal

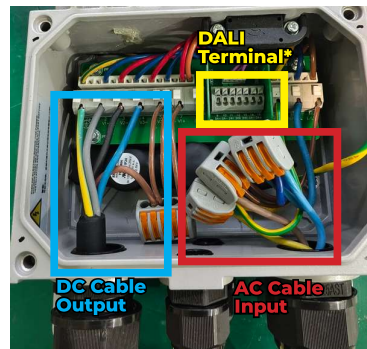


Feed cables through the cable glands and retighten to ensure IP rating. Connect AC wires to the WAGO connectors. To connect the LED cables, connect the brown DC cable to the WAGO connector, earth cable to earth terminal and the black & blue cables to the V1- and V2- terminals as shown.

1800W



Loosen cable glands to allow AC and DC cable access to the terminal



Feed cables through the cable glands and retighten to ensure IP rating. Connect AC wires to the WAGO connectors. To connect the LED cables, connect the brown DC cable to the WAGO connector, earth cable to earth terminal and the black, blue and grey cables to the V1-, V2- and V3- terminals as shown.

V4, Feb 2026