



# AFL

## The Leaders in Fibre Optic Technology

- Fibre Cable
- Cable Assemblies
- Enclosures & Racks
- Fibre Termination & Splicing
- MTP Cabling Systems
- Fibre Passive Devices
- Test, Inspect & Locate
- Copper Cabling Systems
- Harsh Environment Assemblies
- Networking & Media Conversion

With a rich history in the fibre optic industry and an ever-growing global footprint, AFL not only exceeds expectations, but raises them. Our mission is to connect our customers around the world with innovative technologies, exceptional products and high quality services. Whether you need to build a network, upgrade your broadband system, expand a central office or connect a campus through fibre optics, AFL connects you with the solutions that fit your every need.

100085904

## Smarter way to save

Did you know lighting can account for up to 40 per cent of electricity usage in commercial premises?

With the cost of electricity rising year on year, consumers and facility managers are looking for smarter ways to save on their bills. The obvious move is to switch to LED lighting, which will provide significant energy savings compared to traditional lighting solutions. These savings, however, can be increased even further.

Energetic Lighting Australia provides a range of energy efficient fittings that combine easy-to-use, built-in energy saving technologies to decrease electricity usage and save



even more money.

An outstanding example of this is the easy-to-install Stellar batten, which delivers a twofold approach to saving energy. Firstly, it comes with a multi-power switchable driver, providing the options of 9/12/17/20W for the 2FT version, and a massive choice of 12/15/22/26/29/32/40W for the 4FT version, meaning that it can be adjusted to suit almost any application. Secondly, using

the optional microwave sensor, the Stellar batten can be set to illuminate an area when presence is detected, and switch off completely when the ambient light is sufficient.

Because Energetic Lighting Australia is a subsidiary of the Yankon Lighting Group, potentially the world's largest and fastest growing multinational manufacturer of LED lamps and fittings, you know that you will be installing a quality product you can trust. ■

## Wireless car park entry system

enLighten is widely regarded as a leader in energy efficient LED lighting, with a range of products regularly delivering energy savings of up to 93 per cent. Its latest wireless car park entry system has been designed to increase safety and maximise savings in and around carpark entrances.

The newly developed wireless car park entry system uses a proprietary smart control lighting system, which communicates via RF waves with a bank of luminaires that automatically adjusts the lighting levels to achieve those specified in the Building Code of Australia for both daytime (800 lux) and night time (160 lux) operation.

Smart controls and good car park design play a vital role in protecting vehicles and, more importantly, their human cargo. Most people don't link road safety issues and good car park

lighting together. One of the most common design failures can be seen in the entry and circulation lanes near the front entrance.

When entering a car park, a driver's eye must adjust quickly, adapting from the bright daylight conditions to the darker car park environment. This transition can lead to a temporary blinding, making it difficult for the driver to react to obstacles or pedestrians. Car park entrances can often be located in high pedestrian areas, this temporary loss of clear vision is enough to create serious injuries.

Car park entrances are a dangerous place. Australian Standards (AS 1680) specifies 800 lux for the first 15 meters of a car park entrance during the day and 160 lux at night, followed by 160 lux for the next 4m at all times. This helps transition the lighting level upon entry

and reduces the effects of blinding.

Innovation is in enLighten's DNA and this can be seen in the smart controls technology used in the wireless car park entry system (CECS).

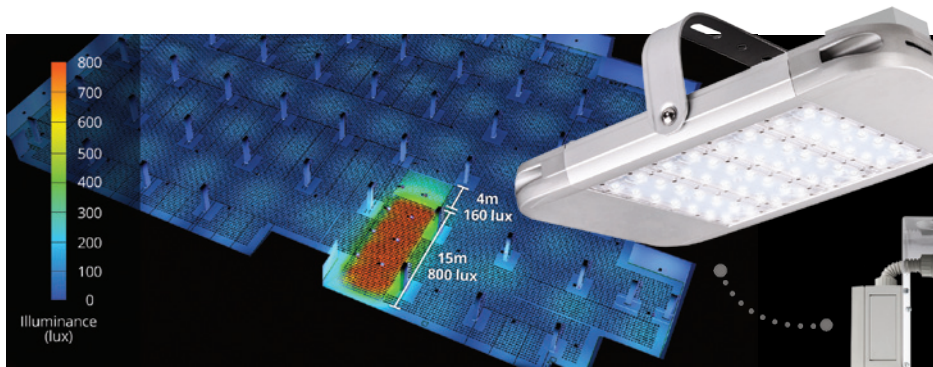
The CECS comprises of RF enabled Tauro Eco LED low bays, a twilight sensor and an RF controller placed at the car park entrance. The twilight sensor assesses the outside light level via a photo electric (PE) cell and the controller communicates with the lights via a self-configurable wireless mesh to deliver 800 lux during the day and 160 lux after dark.

This mesh network is self-healing in nature, every light talks to the controller and amongst themselves. If a light loses communication with the controller, it can still tether to the nearest light to reconnect again to the control signal.

The CECS has a built in safety mode in case the controller gets damaged in an accident. The lights will automatically default to the full light output level, until the controller is replaced, this ensures

that the entrance is never under lit. Commissioning is very simple and requires no complicated network setup. The smart controls system combined with the LED

lights can reduce your energy and maintenance costs. ■



# Innovation and optimisation

Huawei has released its SUN2000-5/6KTL-M0 three-phase smart energy centre for the Australian residential market. The SUN2000-5/6KTL-M0 smart energy centre adopts a fully digital design and boasts the following advantages:

**Higher yields** — high-efficiency inverter topology (max. efficiency 98.6 per cent), one MMPT per two strings design, the inverter achieves higher yields by minimising energy loss.

**Simple and easy** — supports 0-100 per cent flexible optimiser solution that's ideal for any rooftop, with direct communication with optimisers via DC PLC. Using an optimised AC connector for quick wiring, and 2G, 3G, 4G (via 4G Dongle)/WLAN (via WLAN dongle) for data transmission, the Huawei solution make the residential system simpler and easier.

**Battery ready** — with the integrated

plug-and-play energy storage interface, end-users are not required to buy additional battery connection devices when they retrospectively add battery to their existing solar system.

**Safe and reliable** — IP65 protection level and no-fuse design make the Huawei three phase inverters run well in all types of outdoor environments. By integrating lightning protection for both DC and AC, the inverter is safer and more reliable.

All in all, these technological breakthroughs greatly improve system reliability, shorten the installation time, reduce the system investment cost, and help customers maximise ROI within the life cycle of their residential system. To cap it off, Huawei offers a 10-year warranty to future-proof customers' investment, making this product one of the most competitive residential three-phase inverters on the market.



Huawei has been ranked number one in the world for global inverter shipments from 2015 to 2017. Based on official statistics, Huawei has invested more than US\$61.87 billion into R&D in the past decade and has been granted a total of 74,307 patents applications. Despite all of its successes, Huawei is fully committed to maintain its customer-centric focus by continuously providing competitive products and solutions through large-scale R&D investment and technological innovations. ■



**enLighten smart control**

**INTELLIGENT WIRELESS LIGHTING CONTROL SYSTEM FOR CAR PARK ENTRANCES**

**THE CECS CONTROLLER ADJUSTS THE LIGHT LEVEL TO COMPLY WITH AS 1680**

**MAKE YOUR CAR PARK ENTRANCE LIGHTING COMPLIANT TO AS 1680**

Call us on 1800 365 444 | [enlighten.com.au](http://enlighten.com.au)